

## “Stretch” the Magic Dragon

Symbol	DMC	Anchor	Color
♥	791	178	cornflower, v. dk.
♦	3829	901	old gold, v. dk.
●	3852	306	straw, v. dk.
○	3821	305	straw
	3852	306	straw, v. dk.
↙	3821	305	straw
=	3822	295	straw, lt.
┌	504	206	blue green, v. lt.
	3747	120	blue violet, v. lt.
..	503	876	blue green, med.
	3840	117	lavender blue, lt.
△	502	877	blue green
	3839	176	lavender blue, med.
⊥	501	878	blue green, dk.
	3838	177	lavender blue, dk.
●	500	683	blue green, v. dk.
	791	178	cornflower, v. dk.
r	3836	90	grape, lt.
	3839	176	lavender blue, med.
#	3835	98	grape, med.
	3838	177	lavender blue, dk.
■	791	178	cornflower, v. dk.
	3834	100	grape, dk.
~	353	8	peach
	3822	295	straw, lt.
⊔	352	9	coral, lt.
	3821	305	straw

Symbol	DMC	Anchor	Color
ϕ	351	10	coral
	3852	306	straw, v. dk.
◀	3328	1024	salmon, dk.
	3829	901	old gold, v. dk.
⊥	352	9	coral, lt.
N	351	10	coral
∩	352	9	coral, lt.
	3836	90	grape, lt.
⊗	3328	1024	salmon, dk.
	3835	98	grape, med.
●	347	1025	salmon, v. dk.
	3834	100	grape, dk.

### General Information:

**Stitch Count:** 33H X 160W

**Finished design sizes:** (stitched over-2 on different fabric sizes. Measurements are approximate!)

18-count: 3.7" X 17.8"

20-count: 3.3" X 16"

22-count: 3.0" X 14.5"

25-count: 2.6" X 12.8"

28-count: 2.4" X 11.4"

32-count: 2.1" X 10.0"

36-count: 1.8" X 8.9"

### General Instructions:

Cross stitch over-two using 2 strands of floss. When two floss colors are bracketed together, use one strand of each together in needle. Backstitch using one strand of floss. (**Note:** The smaller count fabrics will require that you use more than 2 strands for adequate coverage. In order to maintain the integrity of the blended floss colors, you will need to double the amounts of floss: ie: for 18 count fabric, use 4 strands floss in the needle, and backstitch using 2 strands.)

### Backstitching Instructions:

Backstitch after all other stitching has been completed.  
**791** - all blue-green and purple of dragon  
**3834** - all mauve, pink and salmon of dragon  
**869** - all gold of border, and all gold of dragon  
**347** - flames

**Complete floss list:** (depending on fabric count, you may need more than one skein of certain colors of floss!) Numbers are for DMC. Refer to code at left for Anchor numbers.

347	3747
351	3821
352	3822
353	3829
500	3834
501	3835
502	3836
503	3838
504	3839
791	3840
869	3852
3328	

Dear Stitcher,

Depending on your personal preferences, you could easily add metallics to “Stretch”, and maybe a few beads, too. Make him as sparkly or as subdued as you like. As always, the color suggestions given are just that: suggestions! Please feel free to alter colors as your taste dictates. But most of all: **Enjoy!**

With grateful thanks,  
*Teresa*

### PLEASE NOTE!!!

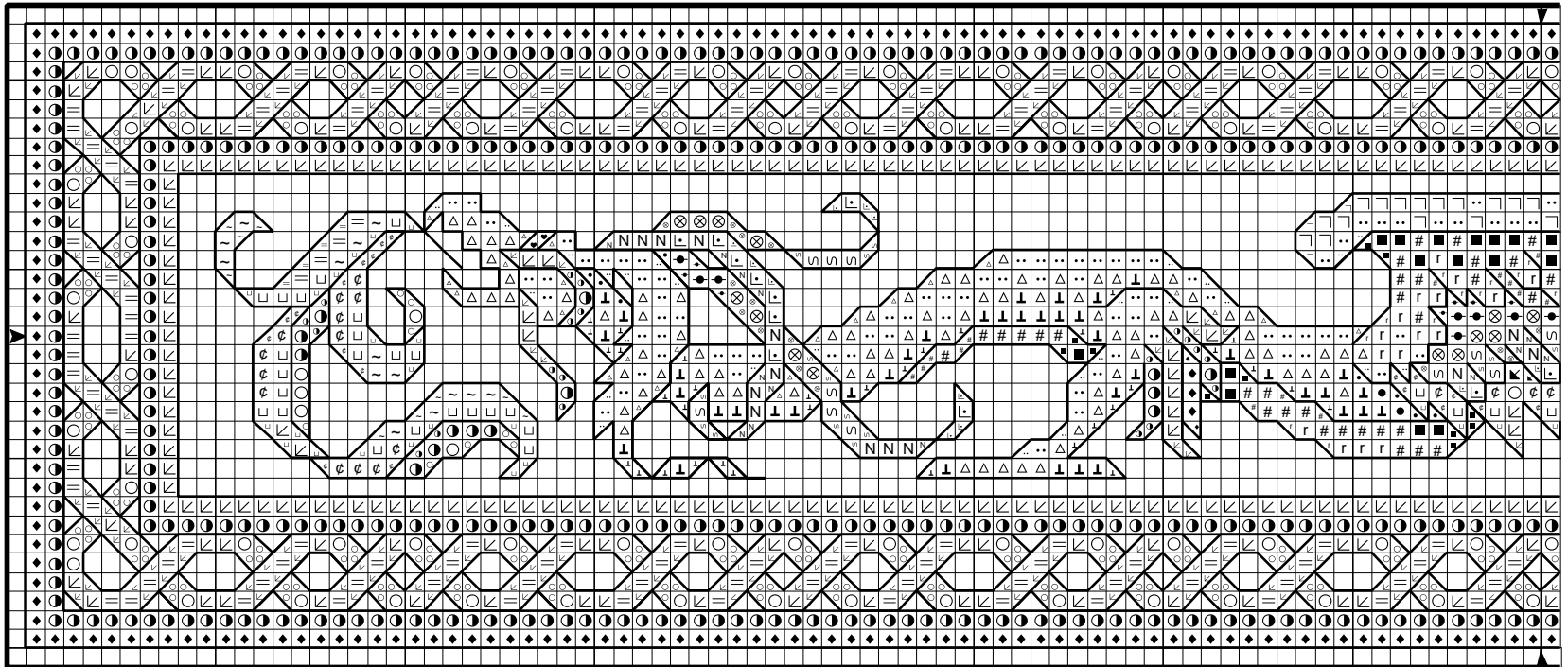
This is a “free” chart, which means you may photocopy it. You may stitch it as many times as you’d like. Shopowners may give it to customers free of charge. However, since TW Designworks retains ownership of the copyright, **you may not sell this chart, or profit from it in any way!** On behalf of needlework designers, I thank you for your support of copyright law!

## “Stretch”

The chart has been divided into 2 sections.

The shaded portion on section B indicates overlap with section A. Be careful not to stitch this area twice!

### Section A



If you have questions about “Stretch” or any of my other designs, please feel free to contact me:

TW Designworks  
PO Box 176  
Montoursville, PA  
17754

On-line:  
[twdesignworks.com](http://twdesignworks.com)

E-mail:  
[tlw@microserve.net](mailto:tlw@microserve.net)

### Section B

